

A3

F

E

D

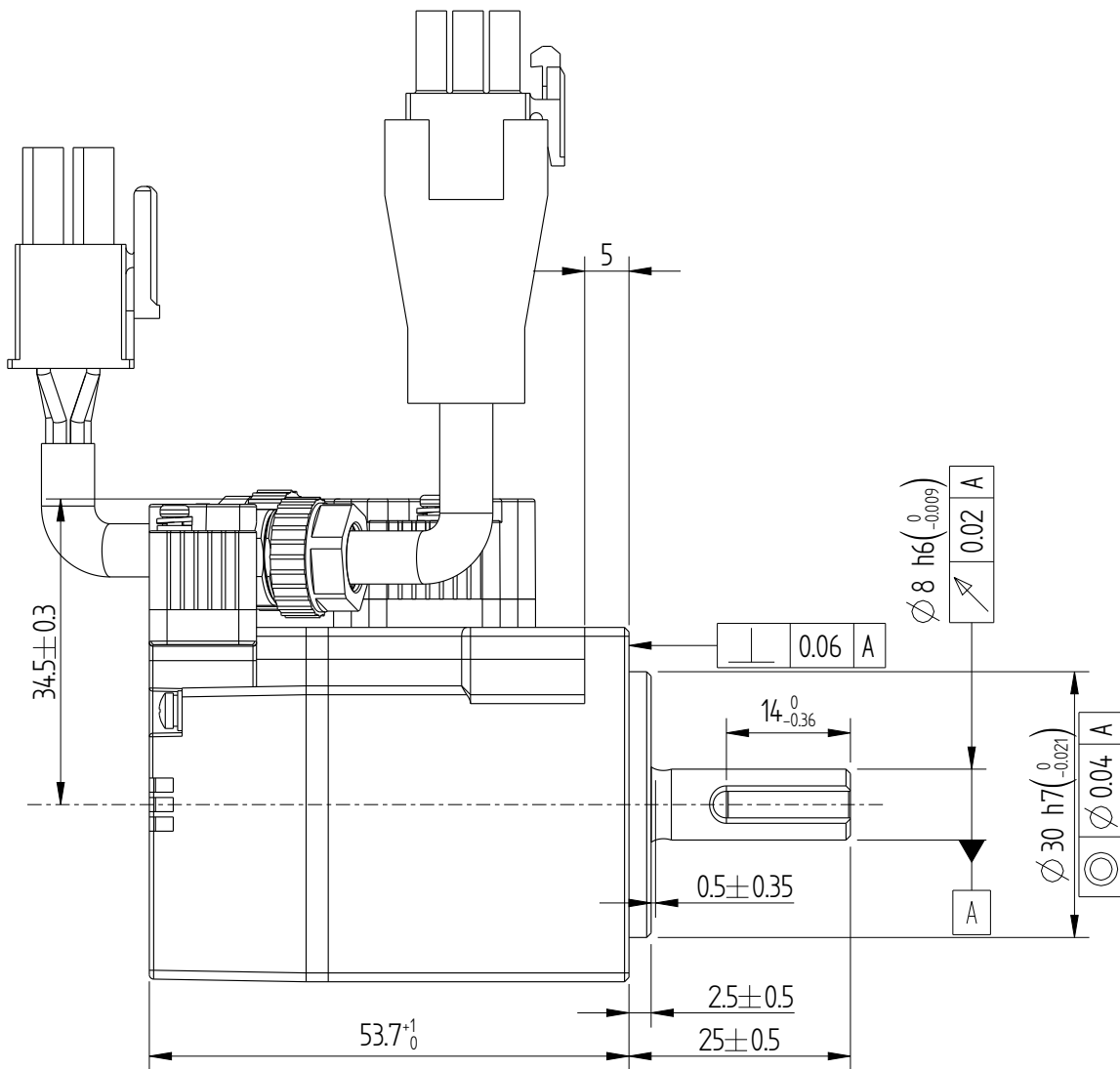
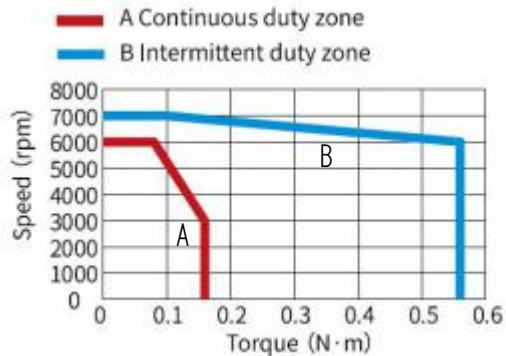
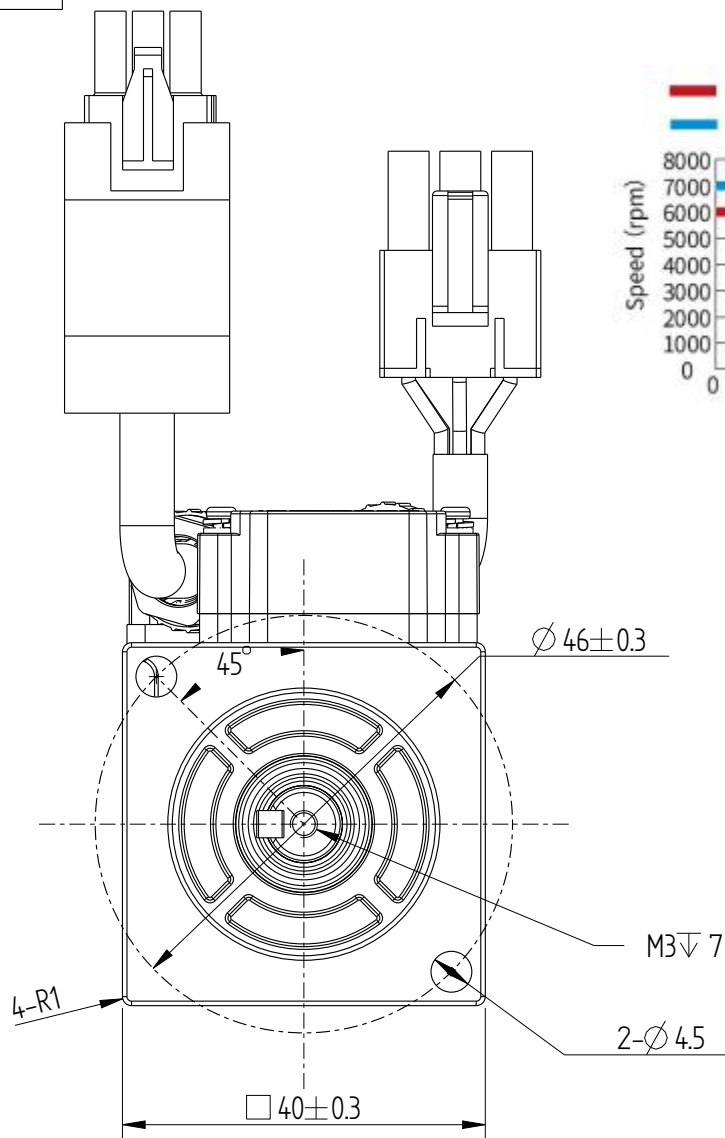
C

B

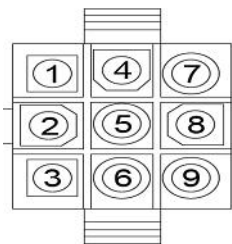
A

Amendment	Description

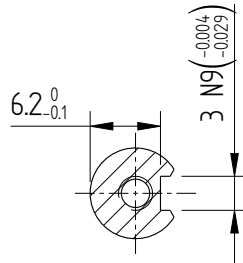
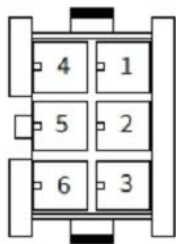
Unit: Millimeter (mm)



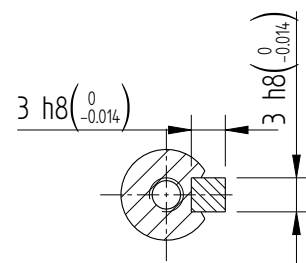
Encoder adapter connector



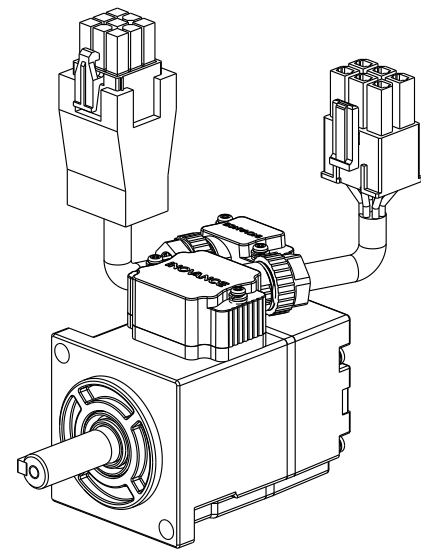
Power wire adapter connector



Dimension of shaft end



Dimension of shaft end with key



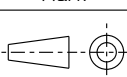
Basic function parameters	
Rated power kW	0.05
Rated voltage V	220
Rated current A	1.27
Peak current at rated speed A	4.78
Rated torque Nm	0.16
Peak torque at rated speed Nm	0.56
Rated speed rpm	3000
Max speed rpm	7000
Rotor inertia kg·cm ²	0.038±10%
Encoder resolution	23bit
Insulation class	F(155)
Protection class	IP67
Static torque of brake Nm	/
Brake power supply V	/
Brake backlash°	/
Duty cycle	S1
Radial load N	≤78
Axial load N	≤54

7pin termina	1	4	3	6	9	8	7
Core color	blue	blue black	yellow	yellow black	red	black	Ground wire
definition	DC+	DC-	PS+	PS-	+5V	0V	shield
	Pair		Pair		Pair		

Power wire adapter connector

6pin terminal	5	4	2	1
Core color	chartreuse	red	black	white
definition	PE	W	V	U

note:1, The lead wire cable length about 300±20mm.

				Motor Outline Drawing			0111A168-WX	
B01	Replace	/	20250530					
Version	Change method	Changed by	Date					
Design	/							
Check	/			/			Mark	
Craft	/							
Verify	/							
Standardization	/							
Approve	/			Weight	Scale	Version	Page 1 of 1	
				0.26kg	1:2	B01	Model	MS1H4-05B30CB-A331R-S-INT